



Junior Ranger Activity Book

Ages 5-8



Name: _____

Date: _____

Introduction



What is a Park Ranger?

Park rangers play important roles in managing parks, historical sites and recreational areas. It is easy to find the rangers! They are usually in uniforms.

Park Rangers...

1. Protect the park
2. Provide information to visitors, lead tours and answer questions
3. Work with teachers teaching classes in the park
4. Help in an emergency by doing search and rescue or fighting fires
5. Research the history, archeology and biology of the park
6. Take care of buildings, trails and exhibits in the park
7. Work with communities so people understand how to visit and protect the park

What is a Junior Ranger?

As a Junior Ranger, it is your responsibility to preserve and protect your parks, to care for your natural and historical surroundings, to share what you have learned about the parks with others, and to continue exploring these treasures.

How may I become a Junior Ranger?

It is very easy. Just follow these directions !

1. Complete any 7 of the 9 activities in this booklet.
2. Share your answers with park rangers.
3. Receive a Junior Ranger badge and a Junior Ranger certificate.

If you don't have time to finish at the park, you can also mail a completed copy of the Junior Ranger book to :

**Junior Ranger Program
Lewis and Clark National Historical Park
92343 Ft. Clatsop Rd. Astoria, OR 97103**

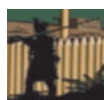
Adults: This is designed as a family program, so feel free to participate with your child. We hope you will have fun and learn more about the park as well.



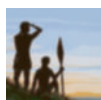
Hi, Junior Ranger !

Explore! Learn! Protect!

Lewis and Clark National and State Historical Parks are in Oregon and Washington. The parks include 11 sites (5 in WA, 6 in OR), and each site is represented by a symbol shown below. These symbols will show you which activities are available at the site you visit (Look at the bottom of each activity page). A park ranger, from one of the sites shown in **bold**, will either stamp or sign your booklet. (Look at page 12)



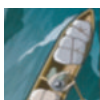
Fort Clatsop, OR
(Visitor Center)



Fort Stevens State Park, OR
(Ranger Station/Historical Area)



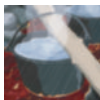
Cape Disappointment State Park, WA
(Lewis and Clark Interpretive Center)



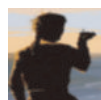
Netul Landing, OR



Dismal Nitch, WA



Salt Works, OR



Station Camp, WA



Fort to Sea Trail, OR



Fort Columbia, WA



Ecola State Park, OR



Discovery Trail, WA

Once you earn your Junior Ranger badge, you may also earn a place in the Junior Corps of Discovery. Your rank is based on the number of parks you've visited.

Private

Visit one site and complete the required activities in this book.

Sergeant

Visit two sites. Don't forget to bring your activity book!

Captain

Visit three sites and complete the booklet.

President

Visit four sites and complete the booklet.
Congratulations!

For more information, please ask the park rangers.



ACTIVITY 1

The National Park Service



Lewis and Clark National and State Historical Parks (NSHP) ★

1. Clark's Dismal Nitch
2. Station Camp
3. Fort Columbia (Washington) State Park
4. Cape Disappointment (Washington) State Park
5. Fort Stevens (Oregon) State Park
6. Fort Clatsop
7. Netul Landing
8. Fort to Sea Trail
9. Sunset Beach State Recreation Area
10. Salt Works
11. Ecola (Oregon) State Park



- ❓ How many NPS sites are there in your home state?

- ❓ What other NPS sites have you visited?

- ❓ How many sites of Lewis and Clark NSHP have you visited?

- 🎨 On the map above, color the state where you live and draw a line showing how you came here.
- 🎨 Color all the states you've been to.

Let your parents help you with this page



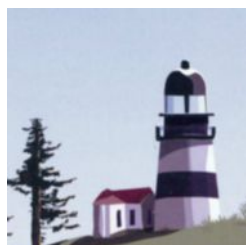
You & Nature

Circle the pictures and draw in the space what you saw, heard and smelled in the park.

I saw...



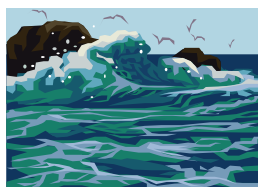
Banana Slug



I heard the sound of...



I smelled...



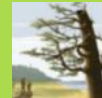
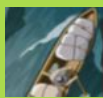
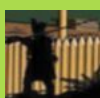
Touch the ground, plants, rocks, or trees carefully.

I touched



.

It felt (cold hot soft hard rough).



ACTIVITY 3

Going into the Forest...

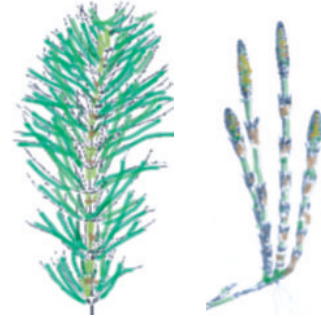
Circle the leaves you saw along the trail.



Western Redcedar



Evergreen Huckleberry



Horsetail



Red Alder



Red Huckleberry



Sword Fern



Draw other leaves you liked.

A large, hand-drawn brown outline of a drawing area, resembling a scroll or a piece of paper, with a vertical line on the left side and a horizontal line at the bottom.



ACTIVITY
4

Whose Tracks Are These?

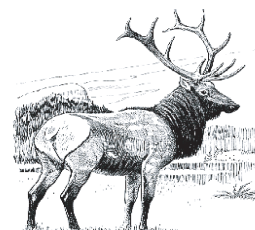
Lewis and Clark National and State Historical Parks are homes to many wild animals. Draw a line to connect each animal's track with its picture.



Canada Goose



Raccoon



Elk



Beaver



Coyote



ACTIVITY
5

Picture Story

This page has an important message. There are some missing words, but each picture gives a clue about them. Decode the message and answer the question.

*There is a word list at the end.



President Thomas Jefferson wanted to explore _____



of the Mississippi _____ from the mouth of the Missouri River to



the Pacific _____. He sent an expedition named the Corps of



Discovery. He selected his secretary, Meriwether _____,



as a leader of the expedition. A _____ of Capt. Lewis,



William _____, was asked to be a co-leader of the expedition. They

5

departed from St. Louis on _____ 14, 1804, and returned to the United

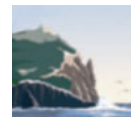
States on September 23, 1806. They met nearly 50 American Indian nations



and described _____ and _____ while they were

exploring.





The Corps of Discovery arrived at the Pacific Ocean near _____



Disappointment. They spent the _____ of 1805-06 at



Fort _____ . Thirty-three people plus a dog camped there,



including Lewis' dog, _____, Clark's slave, _____, and



a Shoshone woman, _____, who helped them.



Lewis and Clark wrote in _____ to record what they _____,



_____ and _____. What did they write in?

Answer: _____

Missing Words

ate, animals, Ocean, winter, Seaman, heard, Cape, Lewis, River, Clatsop, May, plants, saw, west, Sacagawea, friend, Clark, York, journals



ACTIVITY
6

Word Detective

Find and circle the words shown in bold.



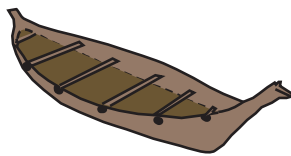
Meriwether **Lewis** was the lead captain on the **expedition**.
(**expedition**:
A journey with a specific purpose).



The **Elk** was used for food, clothing, and candles.



Chinook and **Clatsop** people lived here.



A **Canoe** was the best transportation used in this area.



A **Whale** was found near Cannon Beach.



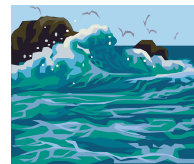
William **Clark** was a co-leader with Lewis.



Salt was used for keeping their meat from rotting.



Seaman was a 150 pound Newfoundland dog brought on the trip by Capt. Lewis.



One of the expedition's goals was to reach the **Pacific Ocean**.

L	A	P	A	C	I	F	I	C	P
N	E	L	Z	D	N	G	R	C	M
C	B	W	H	A	L	E	E	L	C
Y	T	B	I	Y	Q	O	S	A	U
S	P	X	K	S	N	H	L	Y	F
E	I	F	J	A	K	V	G	K	I
A	E	L	C	L	A	T	S	O	P
M	J	Z	E	F	D	X	A	W	E
A	U	B	I	R	M	F	L	H	K
N	W	C	L	A	R	K	T	R	A



ACTIVITY
7

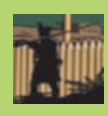
Tree of Life

Clatsop and Chinook people depended on the land, rivers and sea around them to survive. Western redcedar was treated with great respect because it was an important resource for their way of life. It provided necessities; everything from canoes to baskets.

Think of what it would be like to live in a more simple time, before cars, electricity or shopping malls. Then draw a line matching a modern item with something the tribes made from cedar to fill the same role.



Woman pulling a strip of bark from western redcedar.



ACTIVITY 8

Help the Explorer Get Back to Fort Clatsop!

Fort Stevens

Salt Works

Ecola State Park

Cape Disappointment

Station Camp

Fort Columbia

Dismal Nitch

Finish

Start

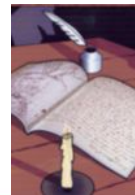
Fort Clatsop



ACTIVITY
9

My Favorite Thing Is...

Draw or write about something you enjoyed in the park.



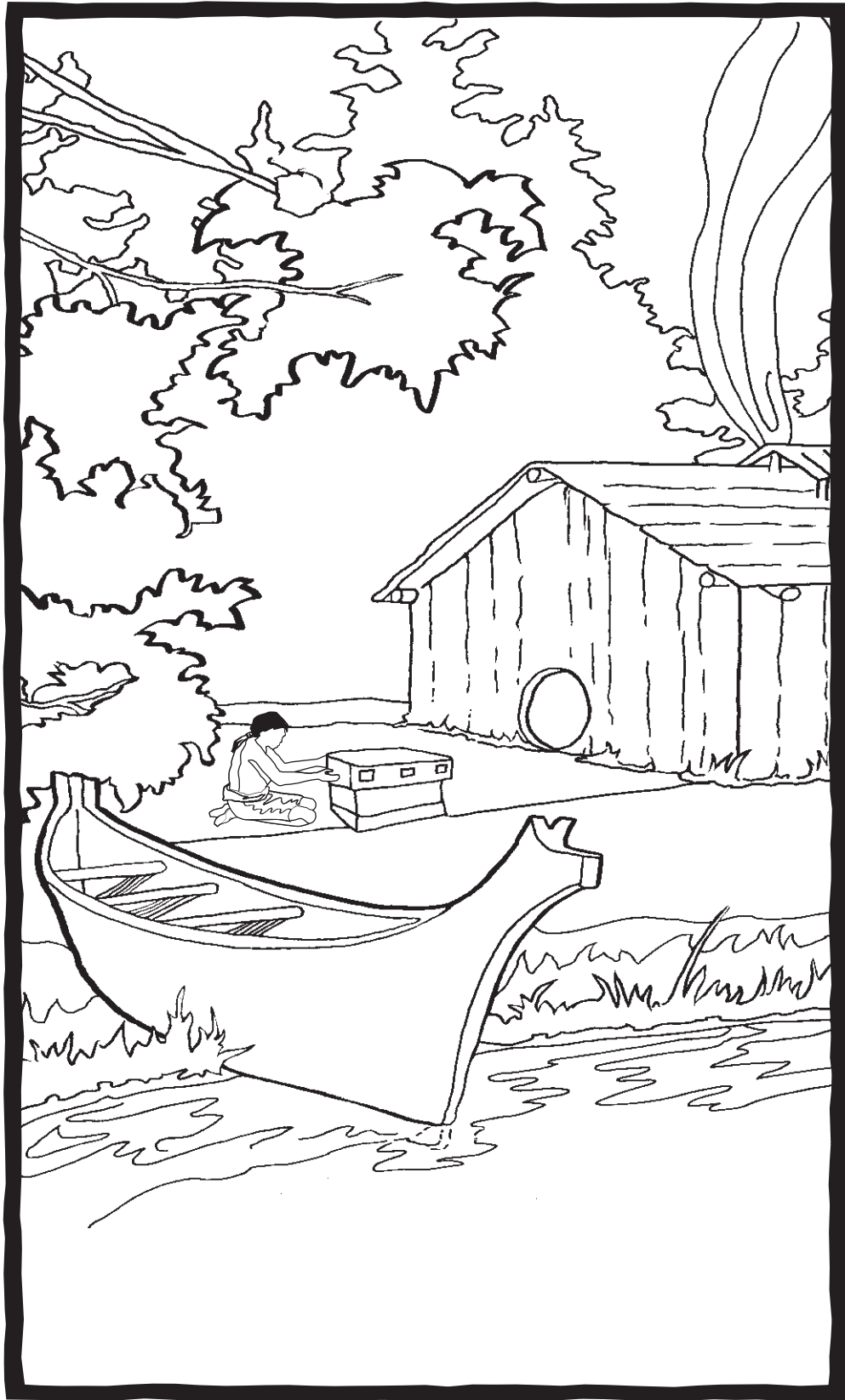
Date

A large, hand-drawn style rectangular area with a dark red border, intended for drawing or writing. The left side of the area features five horizontal lines with dots at their ends, resembling a spiral binding. The top-left corner has a small tab-like shape.



ACTIVITY
10

Coloring Page



Junior Ranger Pledge

As a Lewis and Clark National and State Historical Parks Junior Ranger,



I _____ promise to:
Your name

- ✓ Preserve and protect our parks;
- ✓ Care for my natural and historical surroundings;
- ✓ Share what I have learned about the parks with others;
- ✓ Continue to explore these treasures.

The National Park Service and State Parks care for the special places saved by the American people so that all may experience our heritage. Established by Congress on May 29, 1958 and expanded October 30, 2004, Lewis and Clark National and State Historical Parks is one of many parks administered by the National Park Service and State Parks. The National Park system includes more than 390 natural, historical, cultural, and recreational areas. Be sure to ask about Junior Ranger programs at other National Park Service and State Park sites.

Designed and created by :

Minjung Kang, Junior Ranger Ambassador Initiative, SCA Intern

Contributors :

Staff of Lewis and Clark National and State Historical Parks

September 2006.

Direct comments, questions or suggestions to:

Lewis and Clark National Historical Park
92343 Fort Clatsop Road
Astoria, OR 97103

Tel: (503) 861-2471

Website: www.nps.gov/lewi

This Junior Ranger booklet was created through the partnership of the National Park Service (NPS), the National Park Foundation (NPF), and the Student Conservation Association (SCA) and was made possible through the generous support of Ocean Spray Cranberries, Inc., a National Corporate Partner of the National Park Foundation. To learn more about the online Junior Ranger program, visit www.nps.gov/webrangers.

